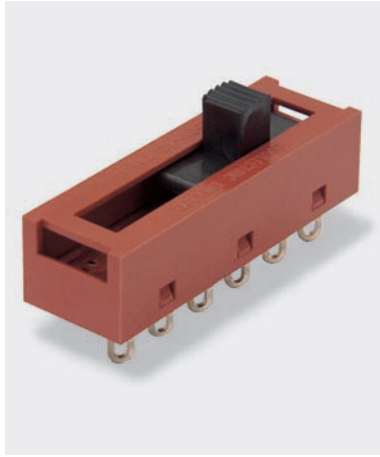


2000 Slide Switches - up to 5 position 10A 250Vac



- ▶ Slide switches
- ▶ Ratings up to 16A, 250V ac
- ▶ PCB and solder terminals
- ▶ 2, 3, 4 and 5 position
- ▶ Choice of circuits
- ▶ Choice of actuators



10A 250Vac T85
6(3)A 250Vac T85



UL CSA 16A 250Vac Non Inductive
UL CSA 4A 300Vac
UL 65°C, file no. E45221, CSA file no. LR10990



RoHS compliant

μ contact gap

Please specify: Standard action (SP116) or Light action (SP118).
2000 series lubrication is inorganic and does not degrade plastics.

Technical data on pages 4 & 5.

T 2 2 20 5 A

TERMINAL CODE SERIES CODE POSITIONS CODE CIRCUIT CODE SLIDER CODE BODY CODE

ORDER FORMAT

TERMINAL	SERIES	POS'N	CIRCUIT <small>Viewed from back</small>	SLIDER	
K 2.8 x 0.8	2	2 Switching positions	10	0	
R 2.8 x 0.8			20	6	
T Solder			3 Switching positions	30	D
X PCB 0.8 Sq.				40	L
Y PCB 0.8 Sq. For mounting stability switches have extra "support" terminals * Nominal - Dimension varies with body type. For exact figure call sales		4 Switching positions		10	1
2.8 x 0.8				20	7
			30	E	
			40	N	
		5 Switching positions	10	2	G
20			9	P	
30			3	A	
40			4	H	
				10	5
				20	B
				30	J
				40	K
					T

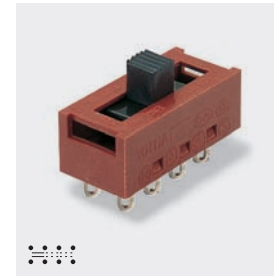
slide switches



X22205C ---



T2220EC ---



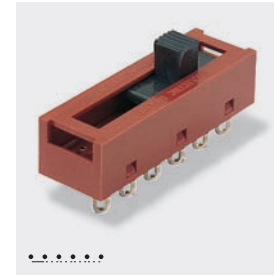
T23206A ---



T24306A ---



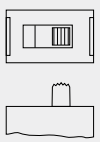
T25302A ---



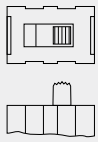
T25100A ---

BODY

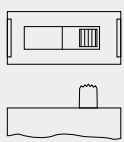
C 2 positions



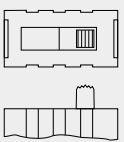
H 2 positions



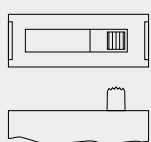
A 3 positions



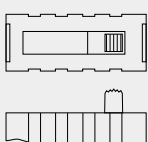
H 3 positions



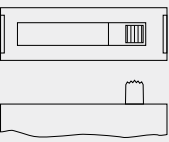
A 4 positions



H 4 positions



A 5 positions



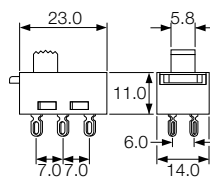
OPTIONS

Color

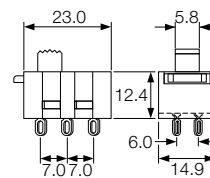
For custom slider colors call the factory. A full range is available for large orders

DIMENSIONS (mm)

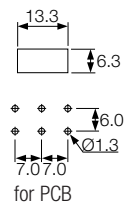
2 Position C body



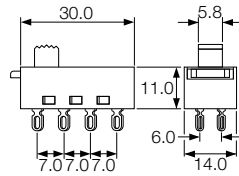
2 Position H body



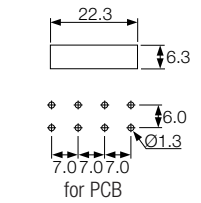
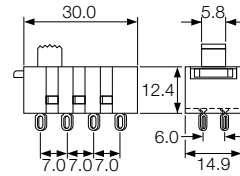
Cut-out/PCB Matrix



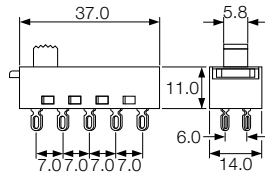
3 Position A body



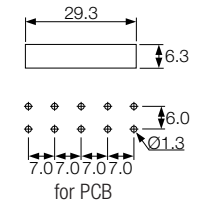
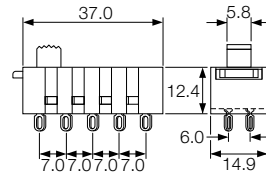
3 Position H body



4 Position A body



4 Position H body



5 Position A body

